



Listening Sessions Centered on Police Services

**Monday, June 16th, 2025
2 p.m. or 6 p.m.**

**Kimberly Municipal Complex – Evergreen Room
515 W. Kimberly Avenue
Kimberly, WI 54136**

Agenda

- Welcome & Introductions
- Village of Kimberly Overview
- Outagamie County Sheriff's Department Presentation
- Fox Valley Metro Police Department Presentation
- Questions & Comments
- Survey Invitation
- Next Steps



Village of Kimberly Overview

How did we
get here?

- Concern regarding the long-term financial sustainability of the partnership.
- Upcoming and overdue capital investments related to evidence storage and current Safety Center Facility located in the Village of Little Chute.
- Village began looking for solutions to solve the evidence storage needs, including alternative sites, leasing options and facility construction.
- Village asked the Outagamie County Sheriff's Department for a Police Services Proposal, which would include the storage of Village evidence.
- Notification to Village of Little Chute and Fox Valley Metro Leadership regarding conversations with the Sheriff's Department.
- Several working sessions with Little Chute and Fox Valley Metro partners to discuss cost saving options.
- Notification to all Fox Valley Metro Department staff that that Village of Kimberly was exploring a potential change.
- Board of Trustees determined the next appropriate step was to conduct a listening session to gather input.



Outagamie County Sheriff's Department

Presentation



Village of Kimberly

Law Enforcement Services with Outagamie County Sheriff's Office



Uniformed Patrol



Uniformed Patrol is supported by all other divisions in the Sheriff's Office. They incorporate all available resources, training, and a high level of professionalism to provide citizens with the best available services. Officers investigate traffic accidents and criminal activity, enforce state laws and ordinance violations and attend community meetings. Officers use problem oriented and community policing philosophies to address the concerns of citizens, provide education and resolve issues.



Law Enforcement Specialists

The Sheriff's Office has 19 Law Enforcement Specialists. They receive specialized training in Interview and interrogation techniques, crash investigation, evidence collection, and other specialized services. Some of the specialized training includes courses in homicide investigation, narcotics investigation, arson investigation, computer crime, domestic violence, and sexual/physical abuse of children. LES's are responsible for investigative follow-up, evidence collection, crime scene analysis and case management. The LES's are trained in techniques and equipment to better investigate constantly changing criminal behavior, such as the increase in computer crimes and identity theft.

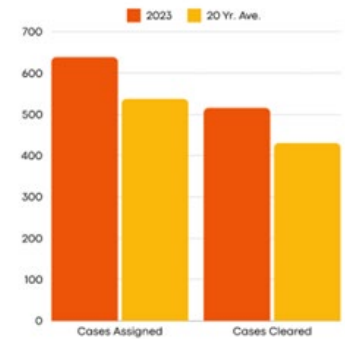
K9 Units



The Outagamie County Sheriff's Office has four K9 teams divided into two groups. All the K9 teams are trained in tracking while half the K9 teams specialize in explosive detection and the other half specialize in illegal drug detection. The K9 teams complete a five week training course in Albuquerque, New Mexico, annual recertification and monthly training sessions. They are deployed about 200 times a year to assist with suspect apprehension, lost persons, bomb threats, tracking, and to locate illegal drugs.

Investigations Unit

The Investigative Unit is comprised of one Captain and seven detective sergeants. This unit has specialized training in a wide variety of crimes. Some of these include internet crimes against children, computer forensics, sexual/physical abuse of children, crimes of violence, white collar crimes, identity theft, financial crimes, domestic violence, accident reconstruction, arson and homicide. They also receive advanced training in interrogation techniques, evidence collection, crime scene analysis and case management. The Investigation Unit has extensive experience writing hundreds of search warrants in a wide variety of areas including buildings, documents, electronic communication, GPS locations and DNA evidence.



Special Investigation Unit

The Special Investigations Unit is a non-uniformed investigative division responsible for investigating drug related offenses, vice-related crimes, human trafficking, intelligence gathering, education, surveillance operations, fugitive apprehension, and gang suppression. These investigators work closely with the MEG Unit. SIU’s mission is to address problems which require specialized equipment, skills and training. SIU Officers operate in a covert fashion and utilize a variety of investigative methods to successfully investigate complaints of illegal activity with a focus on county wide activity and enforcement.



Internet Crimes Against Children Task Force Investigator

The Outagamie County Sheriff’s Office has an investigator assigned to the Wisconsin Department of Justice Internet Crimes Against Children (ICAC) Task Force. This investigator conducts computer based criminal investigations involving children throughout the community and follows up on tips received by the National Center for Missing and Exploited Children. This investigator has received additional specialized training conducting undercover online

Metropolitan Drug Enforcement Group

The Lake Winnebago Area Metropolitan Enforcement Group (MEG) is a four-county narcotics task force with seventeen officers serving Outagamie, Calumet, Fond du Lac and Winnebago Counties. Outagamie County Sheriff’s Office has an investigator assigned to this task force.



Emergency Response Team (SWAT)



The Outagamie County Multi-Jurisdictional Emergency Response Team unit provides SWAT (Special Weapons and Tactics) services to Outagamie County. The team is comprised of 36 members which include tactical operators, energetic breachers, negotiators and snipers. The team has approximately 100 hours of scheduled specialized training each year including numerous trainings at area schools. ERT also provides rescue task force and active shooter training to police agencies, EMS, fire departments, other county entities and schools.

Bomb Squad

The Brown/Outagamie County Bomb Squad is a cooperative effort between the two counties and is one of only six squads state-wide. The team currently consists of three officers from Brown and four officers from Outagamie County. Bomb Squad officers attend a 6 week intensive bomb training course at the Redstone Arsenal in Huntsville, Alabama. The Bomb Squad provides services to counties in Central and Northeast Wisconsin. In addition to responding to calls for service, the Bomb Squad also provides training on response plans and hazardous devices.



Drone Team

The Drone Team started in 2020 consisting of eight pilots. They respond to a variety of incidents including missing persons, crash reconstructions, ERT callouts, suspicious incidents and building searches. The drone team provides valuable real-time critical information ensuring efficient utilization of resources while saving time and lives. In 2024 the Drone Team was used during about 150 incidents.



Behavior Health Officer

The Sheriff's Office has a full time Behavior Health Officer who works with individuals in the community with mental illness. The BHO manages the SAFE project which is a voluntary program which provides helpful information to first responders prior to arrival during a mental health crisis. The BHO is a liaison with the Outagamie County District Attorney's Office and many community organizations to help ensure individuals with mental health issues are made aware of the resources available and avoid unnecessary incarceration.

School Resource Officers

The Sheriff's Office provides contractual SRO services for Shiocton, Freedom and Seymour School Districts. The Officers work in partnership with the School Districts to ensure a safe environment, conducive to the growth and development of the student body to help foster overall student achievement. The officers maintain high visibility in the school, build positive relationships with students, assists administration with emergency planning and critical incident training. SROs cooperate with the school staff to resolve issues and take proactive measures to educate students while maintaining a safe learning environment.



Coverage and Cost

Village of Kimberly Officer and Squad Costs

Wage and Fringe	\$1,078,000
Overtime	\$83,000
Squads, Gas and Maintenance	\$123,300
Cellphones	\$5,400
7% Administrative Fee	<u>\$90,300</u>
Total	\$1,380,000

Village of Kimberly Potential Supply Start-up Costs

Officer Supplies	\$123,000
Squad Equipment	<u>\$153,500</u>
Total	\$276,500

Administrative

- Recruitment
- Screening, background and hiring process
- Benefits
- Use of force/de-escalation training
- 15 week field training program
- 24/7 supervision and administrative support
- Administrative liaison assigned to Village
- Records management
- Clerical support
- Report review and processing
- Open records requests

Squads

- Fleet management
- Outfitting
- Equipment
- Emergency lights/siren
- Cradlepoint (connectivity)
- Net motion – secure network
- MDC – computer
- Radar
- DL scanner
- Software
- Safety Equipment
- Insurance
- Emergency vehicle operation training

Officers

- Extensive on boarding and policy training
- Uniform allowance
- Comprehensive 15 week field training and regular follow up evaluations for 1yr after completion
- Advanced and specialized trainings
- Firearms training and qualification
- Annual in-service training
- Oversight and discipline to include termination if necessary
- Tasers, body cameras, cellphones, criminal investigations, firearms, ballistic best and misc. duty equipment

Miscellaneous

- Reduce office, garage, storage, meeting and office spaces
- TIME certification
- Evidence supplies, processing, testing and disposition
- Citation and warning processing
- Information technology support
- Sheriff Office liaison with Village



Officers Assigned to the Village of Kimberly

	0:00	1:00	2:00	3:00	4:00	5:00	6:00	7:00	8:00	9:00	10:00	11:00	12:00	13:00	14:00	15:00	16:00	17:00	18:00	19:00	20:00	21:00	22:00	23:00
Weekend	2	2	2	1	1	2	2	2	2	2	2	2	2	2	2	3	3	2	2	2	2	2	2	2
Weekday	2	2	2	1	1	2	2	2	2	2	2	2	2	2	2	3	3	2	2	2	2	2	2	2
Weekend Summer	2	2	2	1	1	2	2	2	2	2	2	3	3	3	3	4	4	3	3	3	3	3	3	2
Weekday Summer	2	2	2	1	1	2	2	2	2	2	2	3	3	3	3	4	4	3	3	3	3	3	3	2
	12am	1am	2am	3am	4am	5am	6am	7am	8am	9am	10am	11am	12pm	1pm	2pm	3pm	4pm	5pm	6pm	7pm	8pm	9pm	10pm	11pm

Village of Kimberly Contract Officers

- 6 Officers
- 2 Sergeants
- 2 School Resource Officers (Patrol in Summer)
- 1 Lieutenant (with 24/7 supervision)

Minimum Officer Coverage

- One (1) Officer on 24/7
- Two (2) Officers on Sunday - Thursday 3pm to 11pm
- Two (2) Officers on Friday - Saturday 3pm to 3am



Fox Valley Metro Police Department

Presentation



Est. 1995



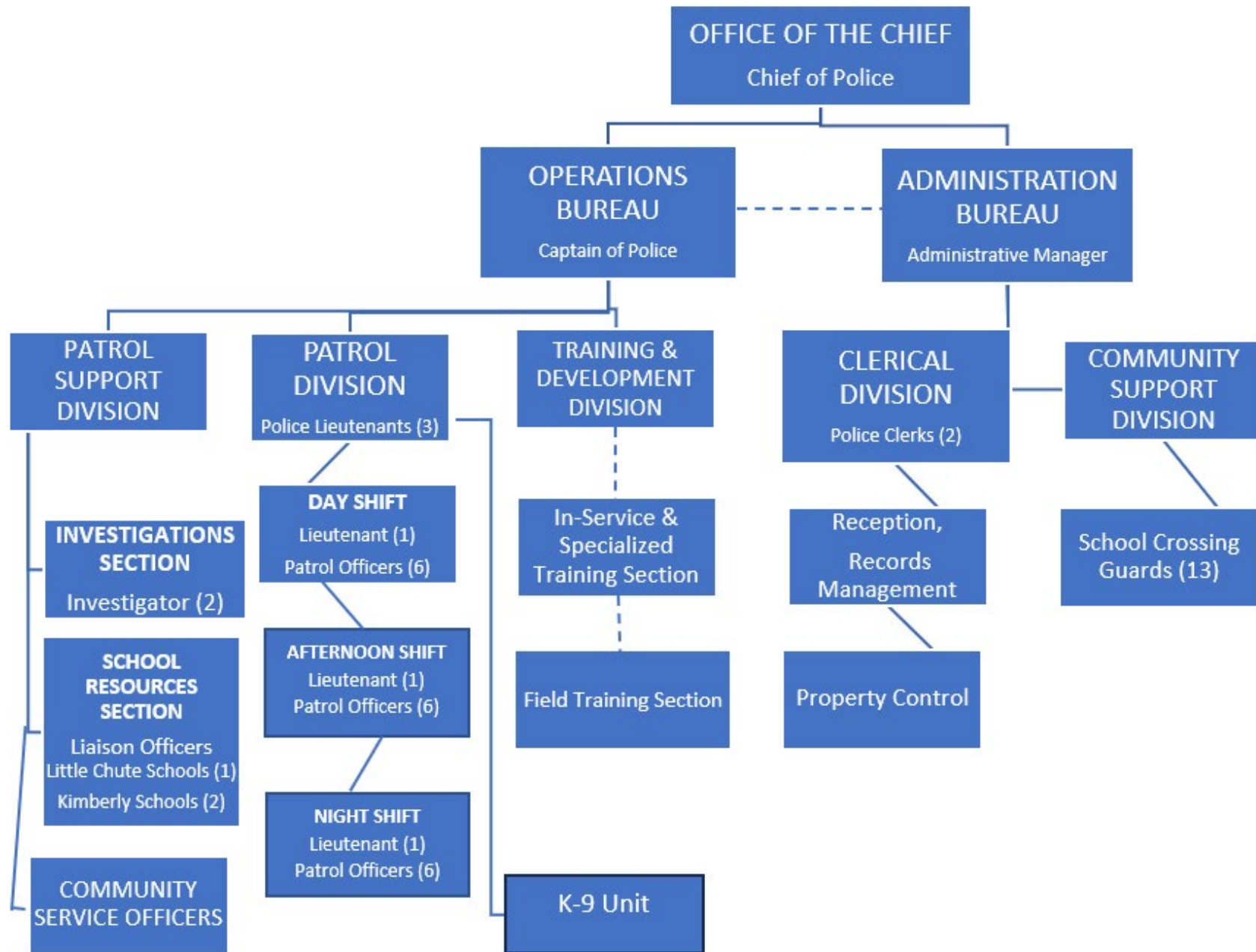


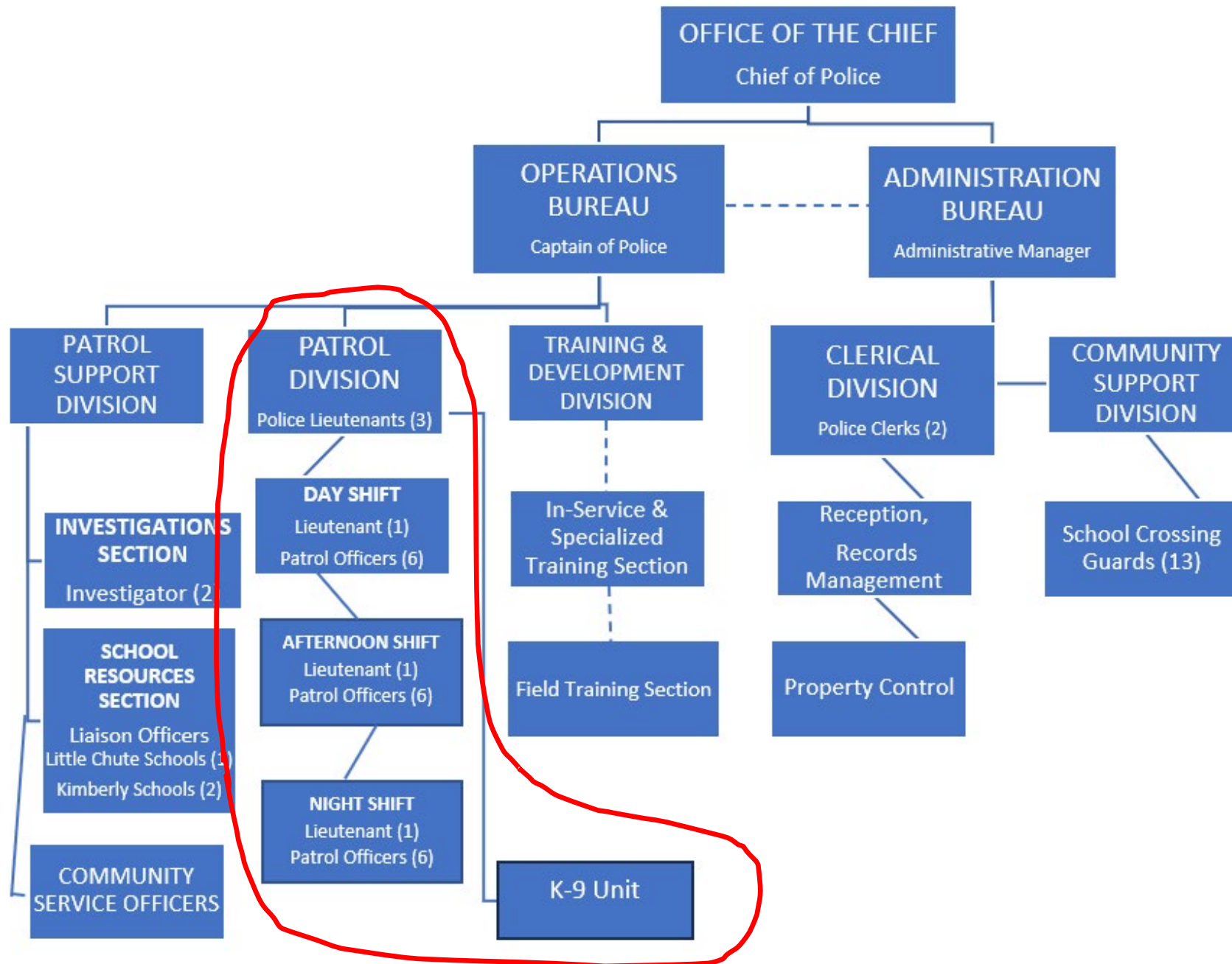
Partnerships in Policing...

Not a tagline or motto but our commitment to you!

30 years of a highly professional, dedicated, community tailored approach to serving and protecting and building trustworthy and sincere relationships.

Experienced and Tenured officers who have been a part of these communities for decades. They know the issues, the people, the businesses and they serve with those long-standing relationships in mind.





2025 Fox Valley Metro Police Department Staff



NAME	POSITION	SERVING METRO SINCE
Daniel Meister	Chief of Police	2018
Jeremy Slotke	Captain	2005
Mark Wery	Lieutenant	2008
Edmund Slinde	Lieutenant	2002
Michael Gostisha	Lieutenant	2012
Jeffrey Nett	Officer (School Liaison)	1995
Randall Lefeber	Officer (School Liaison)	2001
Michael Grumann	Officer	2003
Brandon Stahmann	Officer (School Liaison)	2006
Laura Oster	Officer	2007
Philip Serres	Officer	2008
Scott Van Schyndel	Investigator	2009
Nicholas Uebelher	Investigator	2016
Sam Pynenberg	Officer	2018
Tyler Marquardt	Officer	2020
Hunter Maulick	Officer	2021
Jack Schinke	Officer	2021
Jacob Mocadlo	Officer	2022
Logan Hietpas	Officer	2022
Aaron Radka	Officer	2022
Jason Seavey	Officer	2023
Cole Delvoye	Officer	2023
Steven Jacobson	Officer	2024
Kathryn Ecker	Officer	2024
Devan McCready	Officer	2025
Gary Schmackle	Officer	2025*
Jake Klasinski	Officer	2025
Jacob Burgess	Officer	2025
Jaden Head	Community Service Officer (CSO)	2023
Ciara Oakley	Community Service Officer (CSO)	2024
Hannah Vallafskey	Police Clerk	2024
Sarah Lenz	Administrative Manager	2024

*Previously worked as an officer at Metro



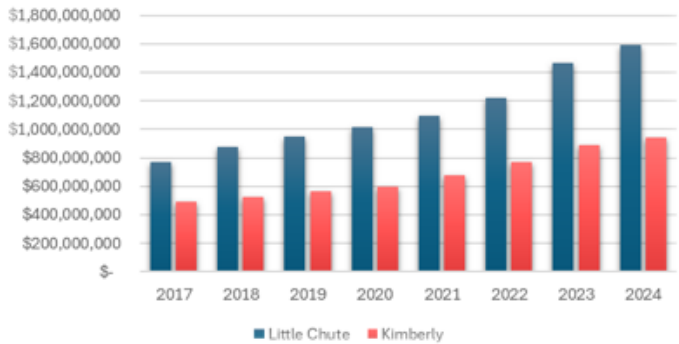




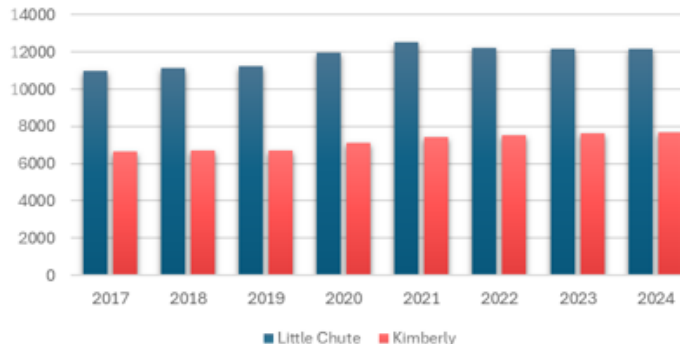
2025 Fox Valley Metro Police Department Budget

The costs for the shared department are paid by each Village proportionately based on **population** (50%) and **equalized value** (50%). Based on that formula for 2025, Kimberly is responsible for 37.87% and Little Chute is responsible for 62.13% of expenses. Official population estimates and equalization amounts from the previous year are used to determine each Village's share for the upcoming year. Per the joint agreement, both municipalities receive a share of revenues that offset the expenditures. In the 2025 budget, Kimberly's total tax levy for FVMPD is **\$1,659,464** and Little Chute's total tax levy is **\$2,722,538**.

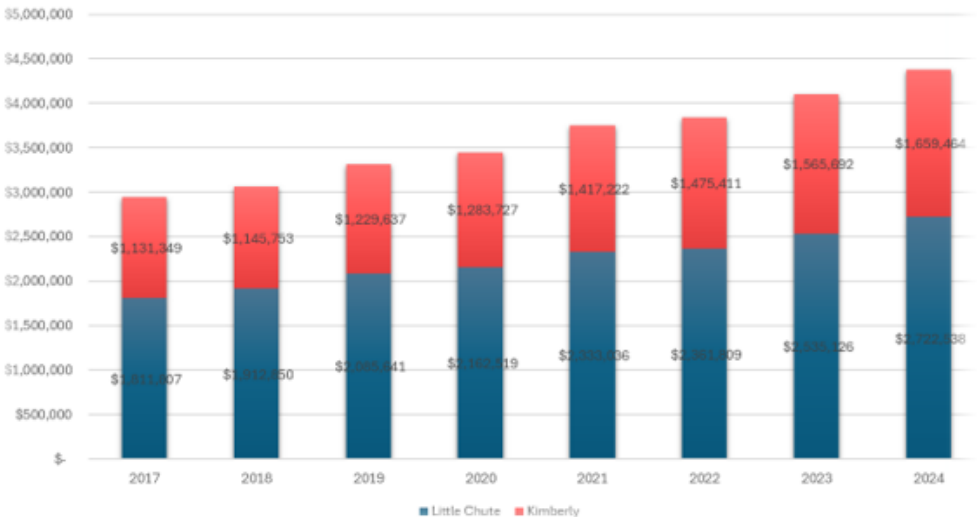
Equalized Value



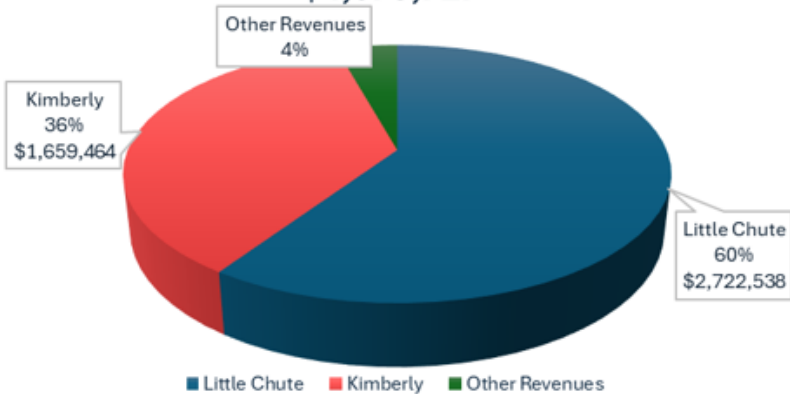
Population



Levy Breakdown for FVMPD Budgets



2025 Total FVMPD Budget
\$4,579,727



Incidents by Year	Village of Little Chute		Village of Kimberly		Total Incidents (both villages)
	Chute	Percentage	Kimberly	Percentage	
2024	11,127	69.1%	4,955	30.9%	16,082
2023	8,529	60.4%	5,600	39.6%	14,129
2022	8,189	60.9%	5,254	39.1%	13,443
2021	7,696	61.5%	4,826	38.5%	12,522
2020	7,223	60.2%	4,782	39.8%	12,005
2019	8,070	58.0%	5,844	42.0%	13,914
Total Incidents	50,834		31,261		82,095
Total Percentage	62.0%		38.0%		

Joint Cost Sharing Formula	Village of Little Chute		Village of Kimberly	
	Chute		Kimberly	
2024	61.82%		38.18%	
2023	61.55%		38.45%	
2022	62.21%		37.79%	
2021	62.75%		37.25%	
2020	62.79%		37.21%	
2019	62.54%		37.46%	
Average	62.28%		37.72%	

Incidents by Year	Village of Little Chute		Village of Kimberly		Total Incidents (both villages)
	Chute	Percentage	Kimberly	Percentage	
2024	11,127	69.1%	4,955	30.9%	16,082
2023	8,529	60.4%	5,600	39.6%	14,129
2022	8,189	60.9%	5,254	39.1%	13,443
2021	7,696	61.5%	4,826	38.5%	12,522
2020	7,223	60.2%	4,782	39.8%	12,005
2019	8,070	58.0%	5,844	42.0%	13,914
Total Incidents	50,834		31,261		82,095
Total Percentage	62.0%		38.0%		

Joint Cost Sharing Formula	Village of Little Chute		Village of Kimberly	
	Chute		Kimberly	
2024	61.82%		38.18%	
2023	61.55%		38.45%	
2022	62.21%		37.79%	
2021	62.75%		37.25%	
2020	62.79%		37.21%	
2019	62.54%		37.46%	
Average	62.28%		37.72%	



FVMPD Annual Reports

2010- 2025



THANK YOU...

for your support and partnership over the
past 30 years!

We are committed to serving you with

***Compassion, Integrity and
Professionalism***



Questions & Comments

Survey Invitation

- Options:
 - Now – return to staff or drop box
 - Later – return to Village Hall
 - Online – www.vokimberlywi.gov/departments/police-department

*Share your
perspective!*



Comments accepted through 4 p.m. Wednesday, June 18th, 2025

Next Steps

- Kimberly Village Board will review and discuss comments and feedback.
- Potential for further exploration.
- Goal for decision-making within the next month. Any decision would be made during an open meeting of the Kimberly Village Board of Trustees.
 - Meetings are held Mondays at 5 p.m. Municipal Complex – Council Chambers – 515 W. Kimberly Avenue
 - 1st and 3rd Mondays – Regular Meetings
 - 2nd and 4th Mondays – Committee of the Whole

Thank You

Chuck Kuen, Village President

ckuen51258@outlook.com

Danielle Block, Village Administrator/Director of Public Works

dblock@vokimberlywi.gov

